

NEUATION



iSHAK BL UNO VT

PRODUCT USER MANUAL

CONTENTS

1.	Introduction	1
2.	Intended Use	1
3.	Features	1
4.	Accessories	1
5.	Technical Specification	2
6.	Types of Clamps	2
7.	Installation	3
8.	Installing plate using O - Ring	5
9.	Installing Foam	5
10.	Operation	6
11.	Tips for Efficient Operation	7
12.	Remote Operation	7
13.	Safety Precautions	11
14.	Cleaning & Maintenance	12
15.	Warranty Statement	12
16.	Product Disposal	13

1. INTRODUCTION

This is a compact personal microplate shaker designed for accurate & even mixing of samples in a microplate. It is optimized to accept all standard plates and its 2.0 mm orbital motion allows thorough mixing across each well. The speed can be set from 300 to 1800 RPM.

2. INTENDED USE

Personal Microplate Shaker is used for mixing liquids in a microtube. It can be used in areas of biochemistry, medicine, biotechnology and microbiology laboratories research.

3. FEATURE

- Exceptionally small footprint
- Uniformly shakes the microplate
- Accepts all standard microplates
- Replaceable clamps to hold different microplates
- Simple tool free clamp replacement
- Adjustable speed from 300 to 1800 RPM
- Anti-spill operation even at higher speeds
- Rubber suction cups for firm grip & stable operation
- Adjustable time from 1 to 99 minutes & continuous mode

Model with USB Mode

- USB port for remote terminal control capability
- Remote operation with data logger


Note: This user guide is intended to assist with the operation and care of the unit only and not for its repair. The customer should not attempt to service or repair the unit. If repairs are required, please contact the supplier.

4. ACCESSORIES

2. Replaceable clamps and O - Rings, 3. Alternate clamps & extra adjustable clamp, 4. Product user manual & warranty card, 5. Foam attachment, 6. Power adapter, 7. USB Cable (for USB model - optional)

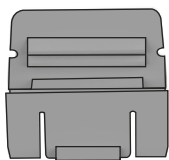
5. TECHNICAL SPECIFICATION

Motor Type	BLDC motor
Orbital Motion	2.0 mm Diameter Orbital motion
Number of microtiter plates	1

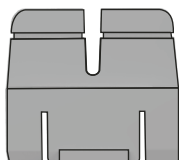
Maximum Volume	384 x 60 μ l
Variable Speed	300 RPM to 1800 RPM
Run Time & Modes	1-99 min & Infinite Mode
Digital Display	Yes
Recommended plate size (LxW)	127.76 mm x 85.48 mm
Dimensions (W x D x H)	127 x 86 x 85 mm
Permissible ambient Temp.	5-40°C
Permissible relative humidity	\leq 80%
Weight	1.4 Kg
Noise Level	<60 dB
Power Adapter Detail	Input: 100-240VAC, 50/60Hz Output: 9V  1.5A
Power Consumption	9 W
USB Mode (optional)	Yes
Altitude	Use upto an altitude of 2000 m above MSL
Pollution Degree	2
Environment	For indoor use only

6. TYPES OF CLAMPS

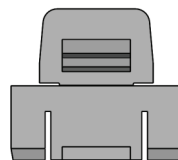
Three types of clamps are provided with personal microplate shaker. Type - A clamp (Universal Clamp), Type - B clamp & Adjustable clamp as shown in the below figure. Type - A clamps & Adjustable clamp are pre-installed and Type - B clamps are with accessories.



Type - A
(Fix Universal Clamp)



Type - B
(Fix Clamp)



Adjustable
Clamp

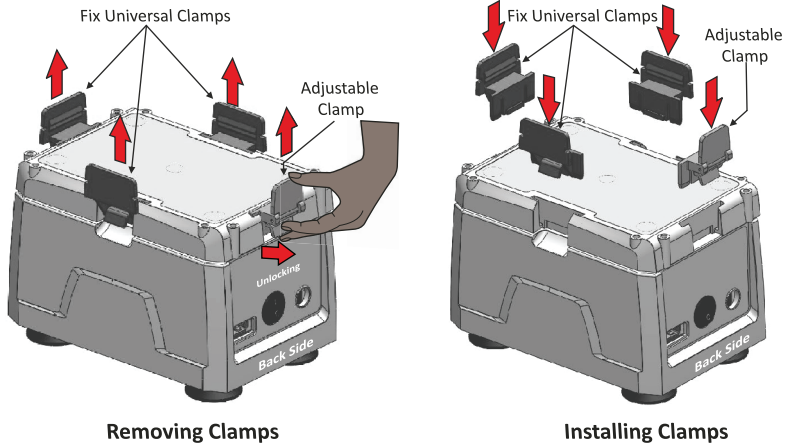
USING DIFFERENT TYPES OF CLAMPS

1. Type - A Clamps are universal clamps and are use for most standard plates.
2. Type - B Clamps are use for larger microplates which contains outside ribs.
3. Adjustable Clamp are use to place microplate easily and lock it after placing it.

7. INSTALLATION

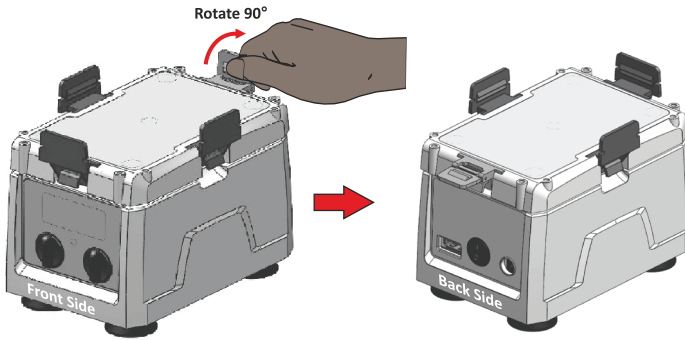
Gently take the shaker out from the packaging box and place it on the flat, stable, clean and non slippery surface. Keep 2 inches clearance from all 4 side of the shaker so that it can be operated easily and safely. Do not lift the shaker by the shaking platform. Check that the rubber suction cup attached to the table well. Plug in the power adaptor pin before connecting to power source. The instruction manual and accessories should be kept with the device and please keep all the packaging in safe storage for atleast 2 years for warranty purpose.

The standard clamps are pre-installed and a set of alternate clamps are supplied with the unit. In case to remove or replace the clamps, gently pull the clamps up after unlocking to remove and push down in the grooves to fix it again.



Note: The front side of the shaker contain speed & time knobs and back side contains power switch & power ports. USB port is available in model with USB. A special adjustable clamp is provided on the back side.

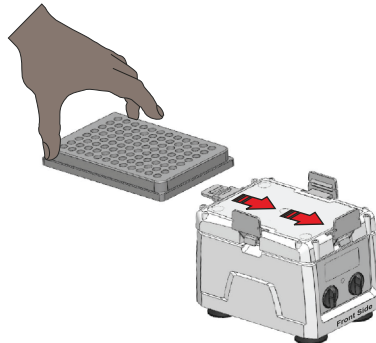
Now to place the microplate on the shaking platform between 4 clamps, gently open the adjustable clamp to 90° as shown in the below figure. Microplate cannot be placed/attached properly to shaker if clamps are not fitted to it. Recommended microplate size (LxW) is 127.76mm x 85.48mm & height from 14.2mm to 22mm.



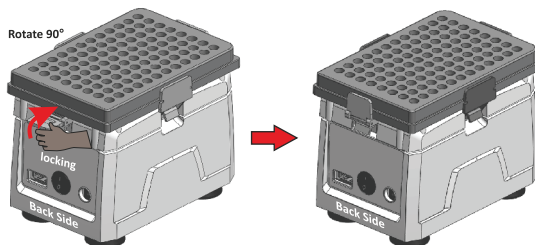
Opening Adjustable Clamp

After opening the adjustable clamp to 90°, place the microplate as shown in the next figure. Gently pull the microplate inside and lock the clamp by turning 90° to firmly tight the microplate on shaking platform.

Note: The front side of the shaker contain speed & time knobs and back side contains power switch & power ports. USB port is available in model with USB. A special adjustable clamp is provided on the back side.



Installing Microplate

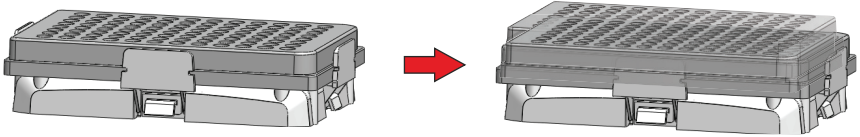


Locking Clamp to firmly tight microplate

Note: We recommend to place the adjustable clamp on the back side of shaker.

8. INSTALLING PLATE USING O - RING

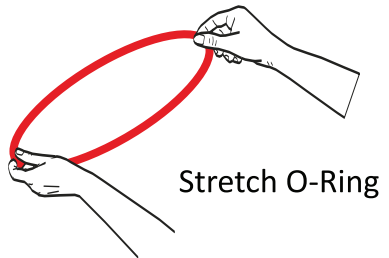
After placing or attaching the microplate between 4 clamps, if microplate is not attached firmly or it moves on the shaking platform during operation, then to attach microplate firmly, O-Rings are needed to attach first. Below figure shows that microplate is not attached firmly.



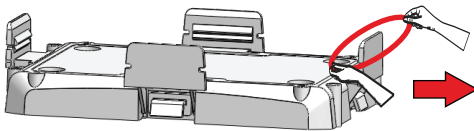
Now take out the O-Rings from the packaging box and attach it on the clamps as shown in below figure.



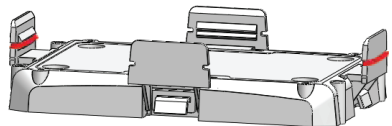
2 - O-Rings



Stretch O-Ring



Attach as shown above



Attach on 2 vertical side
as shown in figure

9. INSTALLING FOAM

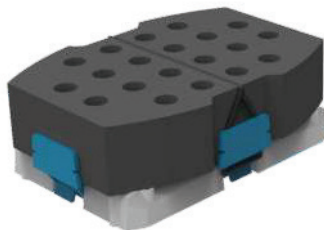
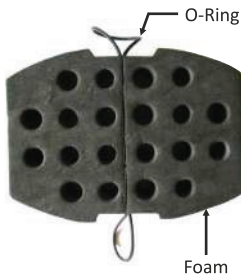
Shaker Foam is used to shake samples using microtubes. It supports all standard microtubes and have the capacity of 20 microtubes.

Tips for efficient operation

The basic requirement to ensure a fast and efficient mixing result is the generation of vortex which allows to produce a flow of the total sample volume.

Based on the density of the samples, speed of the shaker and volume should be maintain. Hence, Ideally larger volume should be mixed with a higher orbit and low speed. Smaller volume requires a lower orbit, but a much higher speed.

Please see the below image to learn how to attach the shaker foam in the shaker platform.



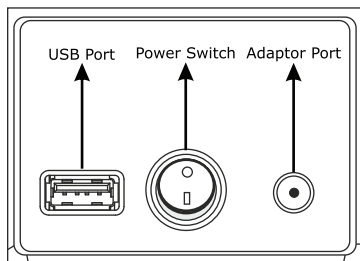
Placing foam on shaking platform

The above image shows the image of Foam. Place this Foam on the shaking platform and use O-Ring to attach the foam. Tight the Foam by pushing the O-Ring on the back side of the champs as shown in above figure. Once the Foam is attached, place the microtubes for shaking.

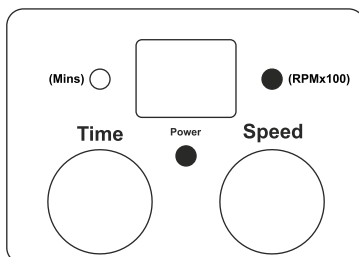
Note: Filling microtubes more than 60% and shaking it at max speed can lead to spill.

10. OPERATION

To start the operation, connect the power adaptor to adaptor port in the back side of the shaker.



Back Side



Front Side

Before starting the shaker, set speed and time from the control panel given in front side of the shaker. Rotate speed knob to set speed and rotate time knob to set time. Speed value is shown in the multiple of Hundred (x100) & Time value in Minutes (Mins). For Example, speed display with 18 digit means 1800 RPM & Time display with 18 digit means 18 minutes. Speed value varies from 300 RPM to 1800 RPM and time value varies from 1 minute to 99 minutes plus continuous mode. Continuous mode is shown with the symbol "][" . After setting the required speed and time, start operation by turning ON the power switch from the back side. The power LED in front will glow as an indication that shaker is started.

NOTE: One can change time & speed during operation. Operation starts with slow speed & steadily rise to set level.

For remote operation, connect the USB cable to the back side of shaker. Once USB cable is connected, controls of shaker will be disabled & only the ON/OFF switch will function.

To stop operation turns OFF the power switch from back side.

NOTE: Remote operation is for the model having USB mode.

11. TIPS FOR EFFICIENT OPERATION

Orbital shaking is undoubtedly a simple way for mixing of assay components but simply putting the samples on a microplate doesn't guarantee complete blending is reached after the mixing process.

A wide variety of well microplates are commercially available. The basic requirement to ensure a fast and efficient mixing result is the generation of vortex which allows to produce a flow of the total sample volume.

The adjustment of the optimal mixing speed for microplates is dependent on the size of the well and the filling volume. The below table is a short summary for recommended mixing speeds for different microplates.

Mixing speeds (rpm) for different microplates depending on filling volume/well (%)			
Filling Volume in %	96 Standard well	96 Deep well	384 Standard well
50 %	1400 - 1800 RPM	800 - 1200 RPM	1800 RPM
75 %	1200 - 1600 RPM	600 - 1000 RPM	1600 - 1800 RPM

Hence, Ideally larger volume should be mixed with a higher orbit and low speed. Smaller volume requires a lower orbit, but a much higher speed.

Note: Overfilling of wells can lead to spillage.

12. REMOTE OPERATION (Model having USB mode)

For remote operation the shaker needs to be connected to a computer.

12.1 SYSTEM REQUIREMENT

For remote operation, the following are the minimum system requirement:

1. Windows 7 with i3 Processor or more and Windows XP Service Pack 3
2. Microsoft .NET framework 4 and Microsoft Office Excel 2007 or 2010.

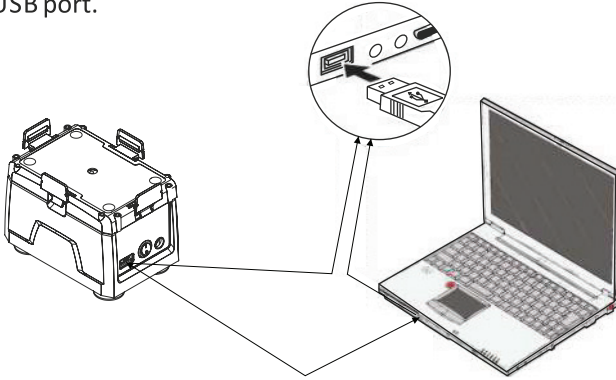
12.2 INSTALLING SOFTWARE

Software CD is provided with the shaker kit. Install the software by running the setup file. The software Installation guide is provided in the software CD. After

installation, software icon will appear on the desktop.

12.3 CONNECTING USB CABLE

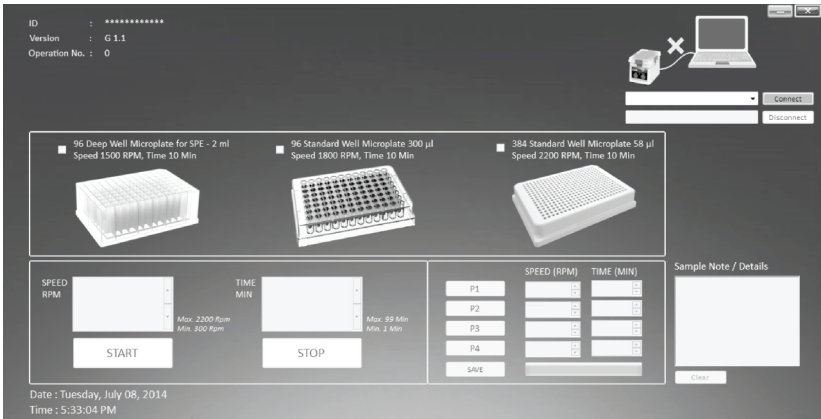
Connect one side of USB cable to the back side of shaker and another side to computer USB port.



NOTE: Remote operation is for the model having USB mode.

12.4 UNDERSTANDING & OPERATING GUI

After installing the GUI software, open GUI software by double clicking the software icon. The following GUI window will open on the computer screen.



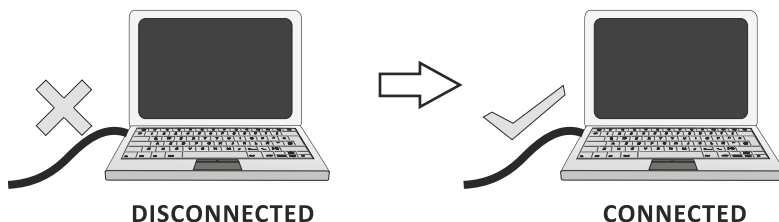
12.4.1 COM PORT CONNECTING AND DISCONNECTING



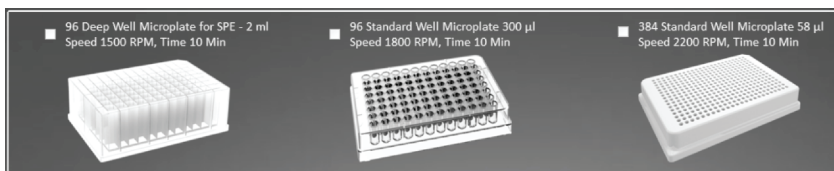
Once you connect the USB cable, the COM PORT for the shaker is detected automatically. Now click on the CONNECT button to connect shaker and computer for remote operation. After connection, the TEXT BOX will show “COM, iShak Connected”.

Note: If any other device is connected after connecting Shaker then the COM PORT of software gets update. So, Select the shaker COM PORT from the COM PORT drop down box and click connect to reconnect the shaker.

The following change of image will appear in GUI screen.

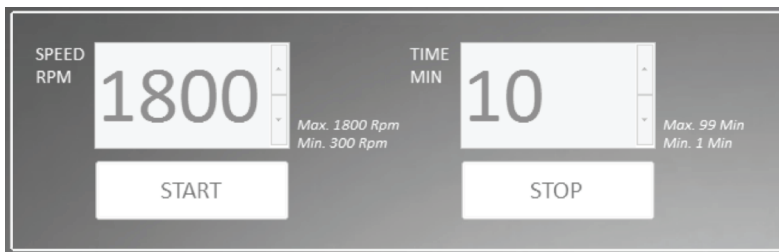


12.4.2 PRE SET PROGRAM SELECTION



Depending on the number of wells and total volume every microplate requires specific speed and time value for proper and anti-spill mixing. The GUI offers pre-defined shaking speed and time for the 3 common microplate use in this shaker. Select the pre-set program of specific microplate and then click on the start button to start operation.

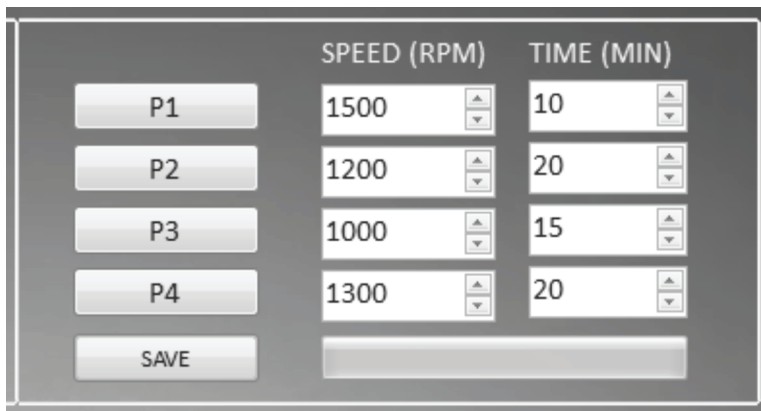
12.4.3 OPERATING THE SHAKER



To operate the shaker set the speed and time, then click on the START button to

start operation. To stop operation, click on the STOP button.

12.4.4 SETTING PROGRAM AND ITS SELECTION



User can save upto 4 user defined programs. To set program, click on the speed and time up/down scroll button of specific program and set the desired value. After setting desired speed and time value, click on the SAVE button to save the programs.

To start the operation as per set program, click on the specific program button and then click on the start button to start the operation.



12.4.5 PROGRAM SAMPLE NOTE AND DETAILS

User can write the details of sample used for shaking for their reference. User can also write any other specific information which is worth mentioning according to user. The data entered here will save in the data logger file for future reference.

Click on the CLEAR button to clear the sample note and details.

12.5 DATA LOGGER

The remote operation comes with data logger features. All operations performed through the GUI will be saved in a excel sheet. With the help of data logger user can view and take a print out of previously performed operation.

User can access the data logger file from the desktop. The data logger file will generate automatically on desktop of user's computer once operation is performed.

The following type of operation details will saved in an excel sheet.

	A	B	C	D	E
1	*****				
2	Date : Tuesday, December 24, 2013				
3	Time : 2:33:22 PM				
4	ID : SA1312AA0001				
5	Version : G 1.1 , D 1.1				
6	Operation No. : 2				
7	Sample Note :				
8					
9	SET SPEED : 700 RPM				
10	SET TIME : 11 MIN				
11	-----				
12	STOP SPEED : 700 RPM				
13	STOP TIME : 10 MIN 57 SEC				
14	RUN TIME : 0 Hour And 0 Min And 3 Sec				

NOTE: The GUI software will not operate if data logger file is open. Be sure to close the log sheet before remote operation.

13. SAFETY PRECAUTION



Read all safety & usage information provided in this manual carefully before using the device.

1. Do not lift the shaker by holding the microplate or shaking platform.
2. Unplug the power adaptor before cleaning.
3. Always operate the unit on a leveled & stable surface to avoid any kind of accident.
4. Spill if it occurs, it should be removed promptly. Do not immerse the unit in liquid for cleaning.
5. The whole unit should be cleaned regularly with a moist cloth.
6. Ensure that while cleaning the unit is not plugged in.
7. Always keep the Shaker clean. Whole unit should be wipe down periodically with a soft cloth. Excessive amount of liquid should be avoided. Liquid should not come in contact with the motor.

8. After cleaning, ensure that all parts are dried.
9. Shaker should be used for the specified application only. It must not be operated in a hazardous or flammable environment and must not be used to mix explosive or highly reactive material.
10. Do not use shaker in hazardous atmosphere or with hazardous material for which the unit is not designed.
11. Do not operate the unit if it shows signs of electrical or mechanical damage. If any such damage is found, contact supplier.
12. Always use the supplied and recommended accessories for best result and product safety.
13. The equipment will restart, both in case of mains interruption and in the case of any fault or mechanical interruption. So the care should be taken based on the sample used for mixing.

14. CLEANING & MAINTENANCE

- Wear protective gloves when cleaning the devices.
- Ensure that while cleaning the unit is not plugged in.
- Clean external surfaces with a damp cloth and mild detergent.
- Do not allow moisture to get into the appliance when cleaning.
- Do not place electrical appliances into the cleaning agents for cleaning purposes.
- Spillages or splashes should be cleaned after disconnecting the unit from the mains electricity supply.
- All maintenance and repair operations must be performed only by qualified and specially trained personnel.

15. WARRANTY STATEMENT

This product is warranted to be free from defects in material and workmanship for a period of two (2) years from date of purchase. Your product will be duly repaired upon prompt notification in compliance with the following conditions :

This warranty is valid only if the product is used for its intended purpose and within the guidelines specified in this instruction manual. This warranty does not cover damage caused by accident, neglect, misuse, improper service, natural forces or other causes not arising from defects in original material or workmanship. This warranty does not cover any incidental or consequential damages, commercial loss or any other damages from the use of this product.

The warranty is invalidated by any non-factory modification, which will immediately terminate all liabilities on us for the products or damages caused by its use. The buyer and its customer shall be responsible for the product or use of products as well as any supervision required for safety. If requested the products must be returned to the distributor in well packed and insured manner and all shipping charges must be paid.

Some states do not allow limitation on the length of implied warranties or the exclusion or limitation of incidental or consequential damages. This warranty gives you specific legal rights. This warranty is given expressly in lieu of all other warranties, expressed or implied.

The purchaser agrees that there is no warranty of merchantability or of fitness for any intended purpose and that there are no other remedies or warranties, expressed or implied, which extend beyond the description on the face of the agreement. This warranty is only applicable to the original purchaser.

The software is made available with the kit. It is designed to work on Windows XP SP3, Windows 7. The software should be used as explained in the user manual. The warranty does not cover the software failures due to issues in user system (computer or laptop).

Products received without proper authorization will not be entertained. All items returned for service should be sent postage prepaid in the original packaging or other suitable carton, padded to avoid damage. We will not be responsible for damage incurred by improper packaging.

All items returned for service should be set postage prepaid in the original packaging or other suitable carton, added to avoid damage.

This warranty is valid only if the warranty is registered with the supplier within 30 days from the date of purchase.

For your reference, make a note of the serial number, date of purchase and supplier here.	
Serial No.	Purchase Date
Supplier	

16. PRODUCT DISPOSAL

In case the product is to be disposed of, the relevant legal regulations are to be observed.

Information on the disposal of electrical and electronic devices in the European Community

The disposal of electrical devices is regulated within the European Community by

national regulations based on EU Directive 2012/19/EU on waste electrical and electronic equipment (WEEE). According to these regulations, any devices supplied after 13.06.05 in the business to business sphere, to which this product is assigned, may no longer be disposed off in municipal or domestic waste. They are marked with the following symbol to indicate this.



As disposal regulations within the EU may vary from country to country, please contact your supplier if necessary.

Accumax Lab Devices Private Limited

Plot No. 15, 16 & 32 GIDC Electronic Park SEZ, Sector 26, Gandhinagar, Gujarat, India - 382026.

Website: www.neuation.com