

ACCUMAX



MAKING PIPETTING  
EFFORTLESS

Accumax Pro Mechanical Pipettes

## Accumax Pro Mechanical Pipettes

When it comes to Pipetting precision and ease-of-use are of the utmost importance as they significantly impact user-experience. But, most manufacturers prioritize profits over customer satisfaction due to which their Pipettes are neither easy to user, nor are reliably accurate. These pipettes which are produced without much consideration about user-convenience creates huge problems for users as they find that it becomes difficult to operate the pipette for a long time due to pain in fingers or hands.

Accumax takes a holistic approach to product development by engaging in extensive research about user data and feedback which provides crucial inputs regarding the design of the pipette. The result is Accumax Pro pipettes which deliver exceptional performance and unmatched ergonomics for a great user experience. Designed to offer optimum performance and precision without any sort of fatigue, these pipettes are ideal for long hours of pipetting. Moreover, the intelligent touches to the pipette's design like one-hand tip ejector, lightweight construction, comfortable finger rest, etc. provides exceptional comfort and convenience.



## Product Features



Smooth plunger mechanism offers least resistance for ease-of-use and effortless accuracy.



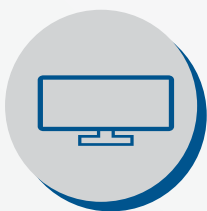
Lightweight construction enhances ease-of-use and provides a fatigue-free experience even after long usage.



Precise setting of selected volume to ensure accurate dispensing of the liquid.



TPE - For Easy Holding & Reduces Heat Transfer Into Pipette

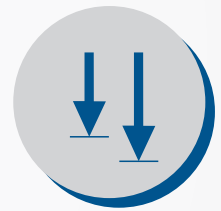


Large volume display avoids dispensing error

Comfortable finger rest for resting the pipette comfortably in either hand.



Two-step plunger operation allows for "reverse pipetting technique"



Tip ejector for smooth one-hand ejection of the tip preventing any contamination.



Durable tip cone offers the highest resistance to shocks and chemical corrosion and is compatible with most types of tips.



Ideal shaft shape helps it reach contents in narrow or deep tubes.



## Multichannel Pipettes

- Soft thermoplastic elastomer (TPE) finger-grip
- 360° Rotational Manifold.
- Leak-free sealing of tips
- Easily removable & fully-autoclavable manifold
- One hand tip ejection
- Soft-force tip loading and ejection
- Consistent sample loding
- Attractive color-coding
- Compatible with most types of tips
- Calibration report enclosed with every pipette



# Ordering Information

Accumax Pro Variable Volume Micropipette

Cat. No.	Volume Range [ $\mu$ l ]	Increments [ $\mu$ l ]	Test Volume [ $\mu$ l ]	Inaccuracy ( $\pm$ ) %	Inaccuracy ( $\pm$ ) $\mu$ l	Imprecision ( $\pm$ ) %	Imprecision ( $\pm$ ) $\mu$ l
VAP-100	0.5-10	0.1	1	2.5	0.03	1.5	0.02
			5	2	0.10	1	0.05
			10	1	0.10	0.8	0.08
VAP-125	0.1 - 2.5	0.01	0.25	12	0.03	6	0.02
			1.25	3	0.04	3	0.04
			2.5	2.5	0.06	1.6	0.04
VAP-200	5-50	0.5	5	2	0.10	2	0.10
			25	0.8	0.20	0.4	0.10
			50	0.6	0.30	0.3	0.15
VAP-300	50-200	1	50	1	0.50	0.4	0.20
			100	0.8	0.80	0.2	0.20
			200	0.6	1.20	0.15	0.30
VAP-400	200-1000	5	200	0.9	1.80	0.3	0.60
			500	0.75	3.75	0.25	1.25
			1000	0.6	6.00	0.2	2.00
VAP-500	10-100	0.5	10	3	0.30	1.5	0.15
			50	1	0.50	0.5	0.25
			100	0.8	0.80	0.15	0.15
VAP-600	100-1000	5	100	2	2.00	0.7	0.70
			500	1	5.00	0.4	2.00
			1000	0.6	6.00	0.2	2.00
VAP-700	2-20	0.1	2	3	0.06	2	0.04
			10	1.5	0.15	1	0.10
			20	0.9	0.18	0.4	0.08
VAP-800	20-200	1	20	2	0.40	0.8	0.16
			100	0.7	0.70	0.3	0.30
			200	0.6	1.20	0.15	0.30
VAP-900	1000-5000	50	1000	0.8	8.00	0.3	3.00
			2500	0.6	15.00	0.2	5.00
			5000	0.5	25.00	0.15	7.50
VAP-905	500-5000	50	500	2	10.00	0.6	3.00
			2500	0.6	15.00	0.3	7.50
			5000	0.5	25.00	0.15	7.50
VAP-1000	1000-10000	100	1000	3	30.00	0.6	6.00
			5000	1.2	60.00	0.3	15.00
			10000	0.6	60.00	0.2	20.00
VAP-1005	500-10000	100	1000	3	30.00	0.6	6.00
			5000	1.2	60.00	0.3	15.00
			10000	0.6	60.00	0.2	20.00

# Ordering Information

Accumax Pro Fix Volume Micropipette						
Cat. No.	Volume [ $\mu$ l ]	Test Volume	Inaccuracy ( $\pm$ ) %	Inaccuracy ( $\pm$ ) $\mu$ l	Imprecision ( $\pm$ ) %	Imprecision ( $\pm$ ) $\mu$ l
FAP-2.5	2.5	2.5	2	0.05	1.6	0.04
FAP-0005	5	5	1.3	0.07	1.2	0.06
FAP-0010	10	10	0.8	0.08	0.8	0.08
FAP-0020	20	20	0.6	0.12	0.5	0.10
FAP-0025	25	25	0.5	0.13	0.3	0.08
FAP-0050	50	50	0.5	0.25	0.3	0.15
FAP-0100	100	100	0.5	0.50	0.3	0.30
FAP-0200	200	200	0.4	0.80	0.2	0.40
FAP-0250	250	250	0.4	1.00	0.2	0.50
FAP-0500	500	500	0.3	1.50	0.2	1.00
FAP-1000	1000	1000	0.3	3.00	0.2	2.00
FAP-2000	2000	2000	0.3	6.00	0.15	3.00
FAP-5000	5000	5000	0.3	15.00	0.15	7.50
FAP-10000	10000	10000	0.6	60.00	0.2	20.00

Multi (8) channel pipettes							
Cat. No.	Volume [ $\mu$ l ]	Increments [ $\mu$ l ]	Test Volume [ $\mu$ l ]	Inaccuracy ( $\pm$ ) %	Inaccuracy ( $\pm$ ) $\mu$ l	Imprecision ( $\pm$ ) %	Imprecision ( $\pm$ ) $\mu$ l
MAP8-010	0.5-10	0.1	10	1.5	0.15	1.5	0.15
			5	2.5	0.13	2.5	0.13
			1	4	0.04	4	0.04
MAP8-050	5-50	0.5	50	1	0.50	0.7	0.35
			25	1.5	0.38	1	0.25
			5	3	0.15	2	0.10
MAP8-100	10 – 100	1	100	1	1.00	0.5	0.50
			50	1	0.50	0.5	0.25
			10	1.5	0.15	0.75	0.08
MAP8-200	20-200	1	200	0.7	1.40	0.25	0.50
			100	1	1.00	0.4	0.40
			20	1.5	0.30	0.75	0.15
MAP8-300	30-300	1	300	0.8	2.40	0.25	0.75
			150	1	1.50	0.5	0.75
			30	1.5	0.45	0.75	0.23

# Ordering Information

Multi (12) channel pipettes							
Cat. No.	Volume [ $\mu$ l ]	Increments [ $\mu$ l ]	Test Volume [ $\mu$ l ]	Inaccuracy ( $\pm$ ) %	Inaccuracy ( $\pm$ ) $\mu$ l	Imprecision ( $\pm$ ) %	Imprecision ( $\pm$ ) $\mu$ l
MAP12-010	0.5-10	0.1	10	1.5	0.15	1.5	0.15
			5	2.5	0.13	2.5	0.13
			1	4	0.04	4	0.04
MAP12-050	5-50	0.5	50	1	0.50	0.7	0.35
			25	1.5	0.38	1	0.25
			5	3	0.15	2	0.10
MAP12-100	10 – 100	1	100	1	1.00	0.5	0.50
			50	1	0.50	0.5	0.25
			10	1.5	0.15	0.75	0.08
MAP12-200	20-200	1	200	0.7	1.40	0.25	0.50
			100	1	1.00	0.4	0.40
			20	1.5	0.30	0.75	0.15
MAP12-300	30-300	1	300	0.8	2.40	0.25	0.75
			150	1	1.50	0.5	0.75
			30	1.5	0.45	0.75	0.23

# ACCUMAX

**Accumax Lab Devices Pvt. Ltd.**  
www.accumaximum.com

ISO 9001:2015  
ISO 13485:2016

\*We also execute OEM projects. Specifications can be changed without notice for quality improvement.